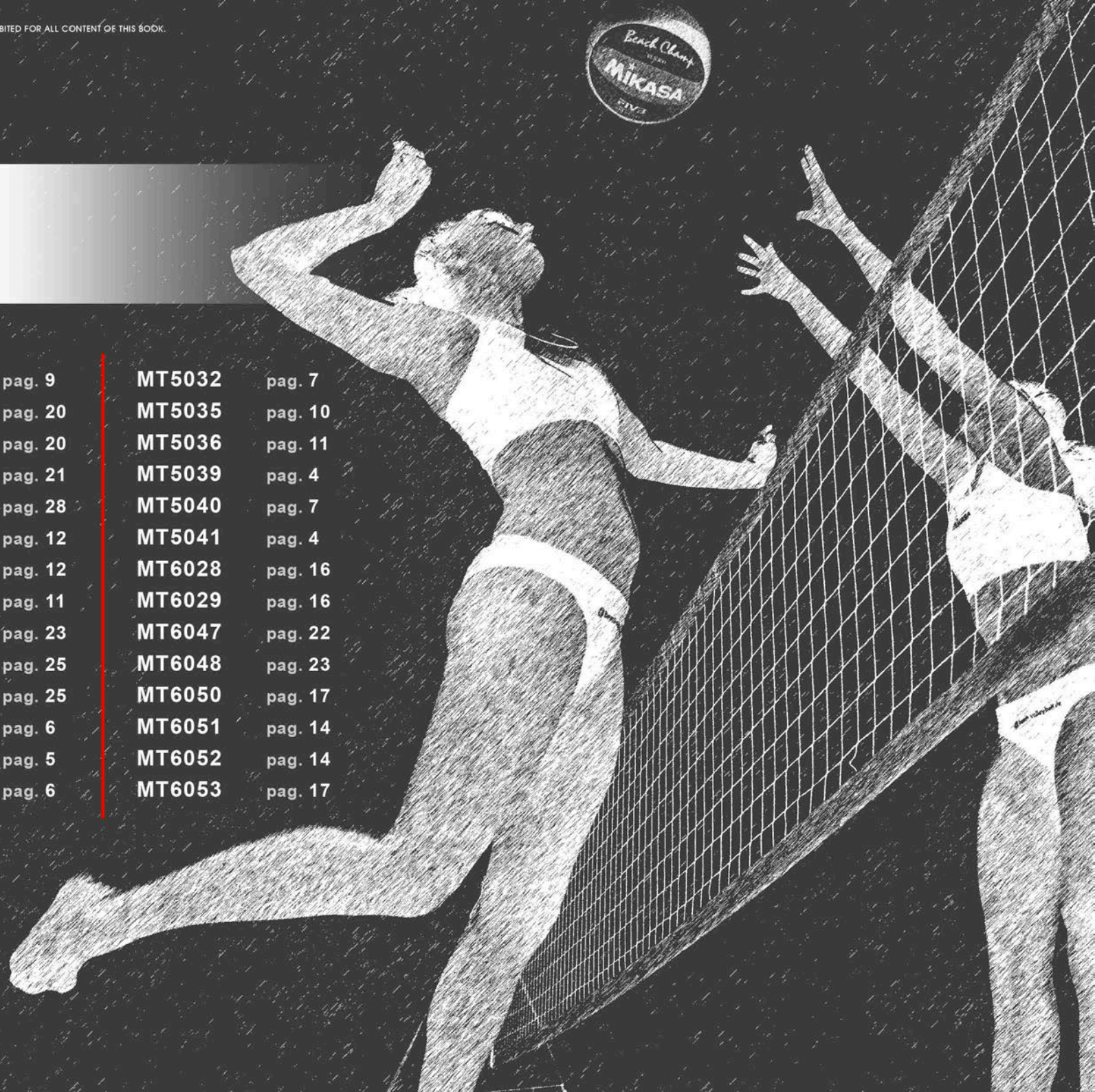




BEACH VOLLEYBALL 2020

# INDEX

MT78	pag. 27	MT460	pag. 9	MT5032	pag. 7
MT79	pag. 26	MT462	pag. 20	MT5035	pag. 10
MT80	pag. 26	MT463	pag. 20	MT5036	pag. 11
MT90	pag. 27	MT464	pag. 21	MT5039	pag. 4
MT197	pag. 18	MT481	pag. 28	MT5040	pag. 7
MT260	pag. 28	MT540	pag. 12	MT5041	pag. 4
MT267	pag. 18	MT541	pag. 12	MT6028	pag. 16
MT405	pag. 8	MT549	pag. 11	MT6029	pag. 16
MT406	pag. 8	MT638	pag. 23	MT6047	pag. 22
MT407	pag. 9	MT911	pag. 25	MT6048	pag. 23
MT456	pag. 15	MT951	pag. 25	MT6050	pag. 17
MT457	pag. 15	MT5001	pag. 6	MT6051	pag. 14
MT458	pag. 21	MT5007	pag. 5	MT6052	pag. 14
MT459	pag. 5	MT5020	pag. 6	MT6053	pag. 17



# MAN APPAREL COLLECTION



ミカサ

**MIKASA**

# MT5041

## MAN TANK

SIZE:  
S - 3XL

FABRIC:  
100% POLYESTER



**021**  
WHITE - BLACK



**050**  
ROYAL - NAVY



**015**  
YELLOW - ROYAL



**03**  
RED - BLACK



**0038**  
LIME - ROYAL

# MT5039

## MAN SHORT

SIZE:  
S - 2XL

FABRIC:  
100% POLYESTER



**049**  
BLACK



**036**  
NAVY



**029**  
ROYAL

# MT5007

**MAN TANK**

**SIZE:**  
S - 3XL

**FABRIC:**  
100% POLYESTER



**V1**  
**WHITE**



**V2**  
**ROYAL**



**V3**  
**BLACK**



**V4**  
**RED**



**V5**  
**NAVY**



# MT459

**MAN SHORT**

**SIZE:**  
S - 2XL

**FABRIC:**  
100% POLYESTER



**025**  
**ROYAL - WHITE**



**046**  
**BLACK - WHITE**



**01**  
**RED - WHITE**



**061**  
**NAVY - WHITE**



# MT5020

## MAN SHORT WITH POCKETS

SIZE:  
S - 2XL

FABRIC:  
100% POLYESTER



**V8**  
ANTHRACITE  
ORANGE FLUO



**V11**  
NAVY - WHITE



**V12**  
BLACK - WHITE



**V13**  
LIGHT NAVY  
ORTENSIA

# MT5001

## MAN SHORT

SIZE:  
S - 2XL

FABRIC:  
100% POLYESTER



**V16**  
ROYAL - NAVY



**V21**  
LIGHT NAVY - KIWI



**V23**  
RED - NAVY



**V24**  
NAVY - FUCHSIA

# MT5032

## MAN SHORT WITH POCKETS

SIZE:  
S - 2XL

FABRIC:  
100% POLYESTER



**V1**  
**BLACK**



**V3**  
**LIGHT NAVY**



**V4**  
**ANTHRACITE**



# MT5040

## MAN SHORT

SIZE:  
S - 2XL

FABRIC:  
100% POLYESTER



**V1**  
**DARK ROYAL**



**V2**  
**DARK GREEN**



**V3**  
**BLACK**



**V4**  
**NAVY**



# MT405

## SLEEVELESS UNDERWEAR SEAMLESS

SIZE:

I = S - M

II = L - XL

III = 2XL - 3XL

FABRIC:

62% POLYAMIDE

38% POLYPROPYLENE



**049**  
**BLACK**



**036**  
**NAVY**

# MT406

## T-SHIRT UNDERWEAR SEAMLESS

SIZE:

I = S - M

II = L - XL

III = 2XL - 3XL

FABRIC:

62% POLYAMIDE

38% POLYPROPYLENE



**049**  
**BLACK**



**036**  
**NAVY**

# MT407

## T-SHIRT UNDERWEAR LONG SLEEVE SEAMLESS



**049**  
BLACK



**036**  
NAVY



**SIZE:**  
I = S - M  
II = L - XL  
III = 2XL - 3XL

**FABRIC:**  
62% POLYAMIDE  
38% POLYPROPYLENE



# MT460

## MAN LONG TIGHT



**046**  
BLACK - WHITE



**0078**  
BLACK - LIME



**SIZE:**  
M - 2XL

**FABRIC:**  
90% POLYESTER  
10% ELASTANE



# MT5035

## MAN T-SHIRT

SIZE:  
S - 3XL

FABRIC:  
JERSEY  
100% COTTON



**V1**  
**BLACK**



**V2**  
**WHITE**



**V5**  
**WHITE**



**V6**  
**WHITE**



**V9**  
**FUMO**

# MT5036

## PULLOVER HOODIE

SIZE:  
S - 3XL

FABRIC:  
FLEECE  
70% COTTON  
30% POLYESTER



**V1**  
BLACK



**0202**  
BERRY



**04**  
RED



**0186**  
FUMO



**029**  
ROYAL



# MT549

## TROUSERS

SIZE:  
S - 3XL

FABRIC:  
FLEECE  
70% COTTON  
30% POLYESTER



**049**  
BLACK



**0202**  
BERRY



**0186**  
FUMO



# MT541

## HOODIE FULL ZIP

SIZE:  
S - 3XL

FABRIC:  
FLEECE  
70% COTTON  
30% POLYESTER



**049**  
BLACK



**0202**  
BERRY



**0213**  
DAZZLING BLUE



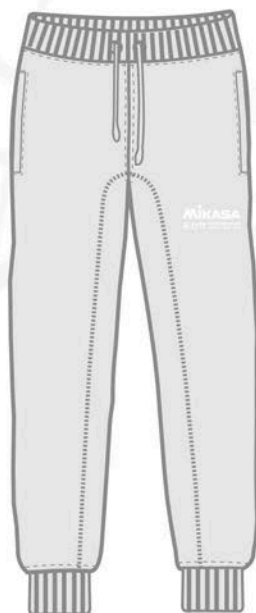
**0186**  
FUMO

# MT540

## TROUSERS

SIZE:  
S - 3XL

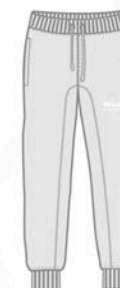
FABRIC:  
FLEECE  
70% COTTON  
30% POLYESTER



**049**  
BLACK

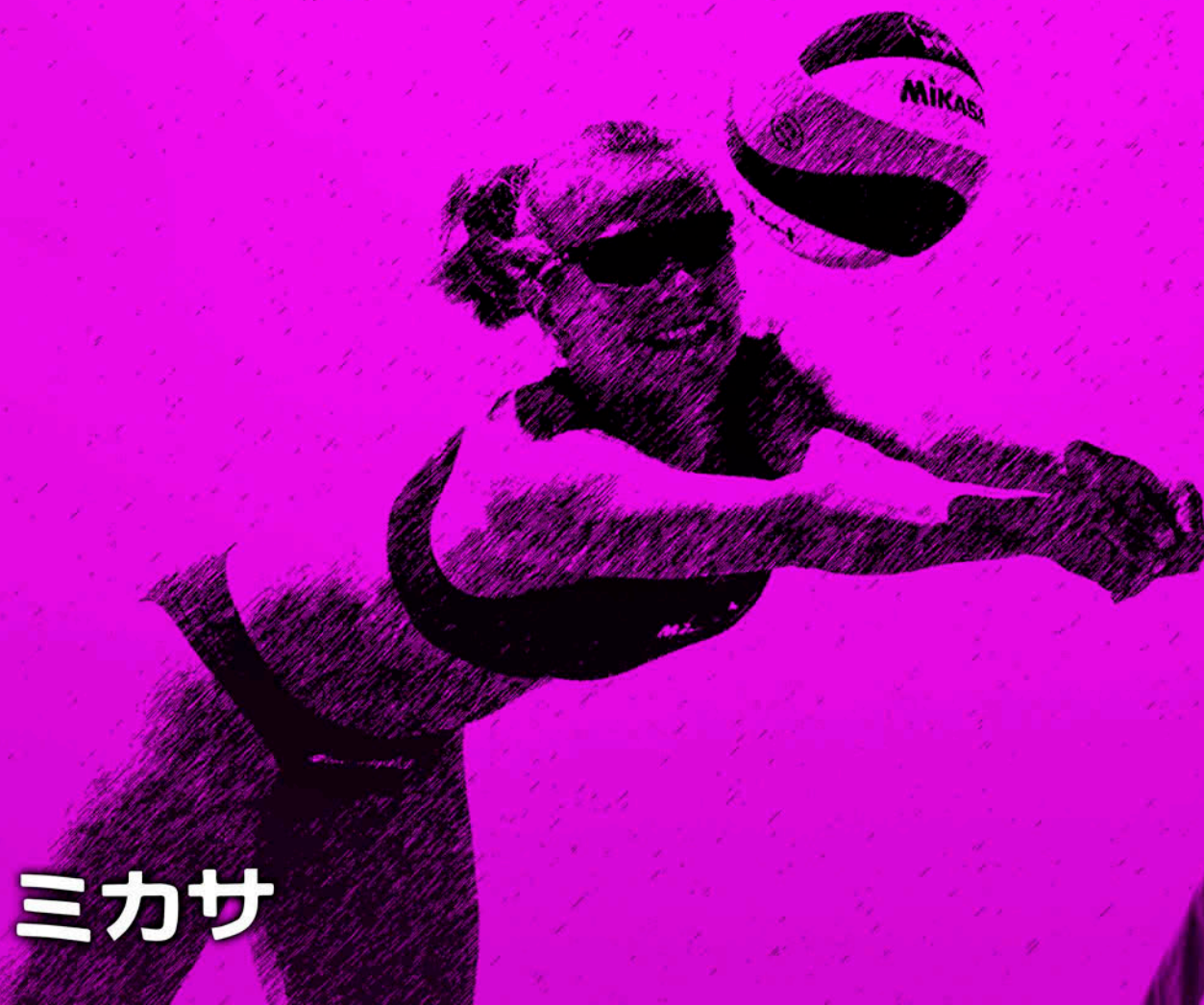


**0202**  
BERRY



**0186**  
FUMO

# WOMAN APPAREL COLLECTION



ミカサ

**Mikasa**

# MT6051

TOP

SIZE:  
S - XL

FABRIC:  
80% POLYAMIDE  
20% ELASTANE



**03**  
RED - BLACK



**050**  
ROYAL - NAVY



**046**  
BLACK - WHITE



**051**  
NAVY - SKY

# MT6052

SLIP

SIZE:  
S - XL

FABRIC:  
80% POLYAMIDE  
20% ELASTANE



**03**  
RED - BLACK



**050**  
ROYAL - NAVY



**046**  
BLACK - WHITE



**051**  
NAVY - SKY

# MT456

TOP

SIZE:  
S - XL

FABRIC:  
90% POLYESTER  
10% ELASTANE



**049**  
BLACK



**036**  
NAVY



**029**  
ROYAL



**022**  
WHITE



**04**  
RED



# MT457

SLIP

SIZE:  
S - XL

FABRIC:  
90% POLYESTER  
10% ELASTANE



**049**  
BLACK



**036**  
NAVY



**029**  
ROYAL



**022**  
WHITE



**04**  
RED



# MT6029

## WOMAN TANK

SIZE:  
S - 2XL

FABRIC:  
100% POLYESTER



**V1**  
WHITE



**V2**  
ROYAL



**V3**  
BLACK



**V4**  
RED



**V5**  
NAVY

# MT6028

## WOMAN SHORT WITH POCKETS

SIZE:  
S - XL

FABRIC:  
100% POLYESTER



**V3**  
FUCHSIA-NAVY



**V8**  
LIGHT NAVY-DARK PINK



**046**  
BLACK-WHITE



**064**  
NAVY-ROYAL-WHITE

# MT6050

## WOMAN BERMUDA

SIZE:  
S - 2XL

FABRIC:  
77% POLYESTER  
23% ELASTANE



**V1**  
**DARK ROYAL**



**V2**  
**DARK GREEN**



**V3**  
**BLACK**



**V4**  
**NAVY**



# MT6053

## WOMAN BERMUDA

SIZE:  
S - 2XL

FABRIC:  
77% POLYESTER  
23% ELASTANE



**049**  
**BLACK**



**029**  
**ROYAL**



**036**  
**NAVY**



# MT197

## WOMAN BERMUDA

SIZE:  
S - 2XL

FABRIC:  
80% POLYAMIDE  
20% ELASTANE



**049**  
**BLACK**



**036**  
**NAVY**



**0021**  
**ANTHRACITE**

# MT267

## WOMAN LONG TIGHT

SIZE:  
S - 2XL

FABRIC:  
90% POLYAMIDE  
10% ELASTANE



**049**  
**BLACK**



**036**  
**NAVY**



**0021**  
**ANTHRACITE**

# WOMAN APPAREL COLLECTION



ミカサ

**Mikasa**

# MT462

## TOP UNDERWEAR SEAMLESS

### SIZE:

I = XS - S

II = M - L

III = XL - 2XL

### FABRIC:

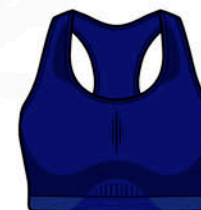
58% POLYAMIDE

35% POLYPROPYLENE

7% ELASTANE



**049**  
**BLACK**



**036**  
**NAVY**

# MT463

## SLEEVELESS UNDERWEAR SEAMLESS

### SIZE:

I = XS - S

II = M - L

III = XL - 2XL

### FABRIC:

62% POLYAMIDE

38% POLYPROPYLENE



**049**  
**BLACK**



**036**  
**NAVY**

# MT464

## T-SHIRT UNDERWEAR LONG SLEEVE SEAMLESS



**049**  
**BLACK**



**036**  
**NAVY**



**SIZE:**  
I = XS - S  
II = M - L  
III = XL - 2XL

**FABRIC:**  
**62% POLYAMIDE**  
**38% POLYPROPYLENE**



# MT458

## WOMAN LONG TIGHT



**049**  
**BLACK**



**036**  
**NAVY**



**SIZE:**  
M - 2XL

**FABRIC:**  
**90% POLYESTER**  
**10% ELASTANE**



# MT6047

## WOMAN T-SHIRT

SIZE:  
S - 2XL

FABRIC:  
JERSEY  
100% COTTON



**V3**  
**WHITE**



**V6**  
**WHITE**



**V7**  
**BERRY**



**V8**  
**BLACK**

# MT6048

## PULLOVER HOODIE



**V3**  
FUMO



**V6**  
FUMO



**V7**  
BERRY



**V8**  
WHITE



**SIZE:**  
S - 2XL

**FABRIC:**  
FLEECE  
70% COTTON  
30% POLYESTER

# MT638

## TROUSERS



**0202**  
BERRY



**0186**  
FUMO



**SIZE:**  
S - 2XL

**FABRIC:**  
FLEECE  
70% COTTON  
30% POLYESTER

# ACCESSORIES

ミカサ



★  
**MIKASA**

# MT911

## RAIN JACKET

SIZE:  
XS - 3XL

FABRIC:  
100% NYLON



**0100**

ROYAL - NAVY - WHITE



**064**

NAVY - ROYAL - WHITE



**029**

RED - NAVY - WHITE



# MT951

## BEACH SOCKS

SIZE:  
XS - XL

FABRIC:  
85% NYLON  
15% ELASTANE

### SIZE CHART / TABELLA MISURE

**XS** 35-37

**S** 38-40

**M** 41-43

**L** 44-46

**XL** 47-49



**0078**

BLACK - LIME



**024**

BLACK - YELLOW



**046**

BLACK - WHITE



# MT79

## SPORTS BAG

SIZE:  
CM 70 X 36 X 34H

FABRIC:  
600D POLYESTER



**049**  
**BLACK**



**036**  
**NAVY**



**029**  
**ROYAL**



**04**  
**RED**

# MT80

## SPORTS BAG

SIZE:  
CM 64 X 34 X 32H

FABRIC:  
600D POLYESTER



**049**  
**BLACK**



**036**  
**NAVY**



**029**  
**ROYAL**



**04**  
**RED**

# MT78

## BACKPACK

SIZE:  
CM 32 X 20 X 48H

FABRIC:  
600D POLYESTER



**049**  
**BLACK**



**036**  
**NAVY**



**029**  
**ROYAL**



**04**  
**RED**



# MT90

## SUNSHADE

SIZE:  
ONE SIZE

FABRIC:  
100% COTTON



**022**  
**WHITE**



**036**  
**NAVY**



**049**  
**BLACK**



# MT481

**CAP**

**SIZE:  
ONE SIZE**

**FABRIC:  
100% COTTON**



**022  
WHITE**



**029  
ROYAL**



**036  
NAVY**



**04  
RED**

# MT260

**CAP**

**SIZE:  
ONE SIZE**

**FABRIC:  
100% COTTON**



**022  
WHITE**



**029  
ROYAL**



**036  
NAVY**



## POWERTEX 100% POLYESTER

Tessuto dalla mano morbida, viene costruito con fibre di poliestere, in fase di finissaggio viene realizzato un particolare trattamento che permette una struttura molto compatta. Ideale per l'uso sportivo.

Soft and feeling fabric, made by polyester yarn.  
The special treatment keeps the tissue closeness. Particularly suitable for sports activities.



## ECO CONCEPT

Tessuto innovativo, ideale per la produzione di capi sportivi per l'outdoor. Protegge dai raggi UV e con la sua elevata traspirabilità controlla l'umidità corporea. ECO CONCEPT libera il movimento perché bielastico, ultra sottile e con un'eccellente copertura. Un tessuto che si conferma un prezioso alleato per gli atleti in quanto favorisce la microcircolazione ed un'adeguata ossigenazione muscolare in ogni fase dell'attività sportiva.

Innovative fabric, ideal for the production of outdoor sportswear. It protects against UV rays and with its high breathability controls body moisture. ECO CONCEPT is two way stretch, ultra flat with excellent coverage. It confirms itself as a precious ally for athletes as it promotes microcirculation and adequate muscle oxygenation in every phase of sporting activity.



## INTENSIVE CONCEPT

Tessuto tecnico sportivo che combina le proprietà di contenimento muscolare alla libertà di movimento con la sua vestibilità perfetta.

Nelle attività outdoor, INTENSIVE CONCEPT protegge dai raggi UV ed eccelle per traspirabilità.

INTENSIVE CONCEPT non tradisce le aspettative neanche in fatto di stile: i suoi colori sono sempre vibranti e brillanti.

Technical sports fabric that combines the properties of muscle containment with freedom of movement with its perfect fit.

In outdoor activities, INTENSIVE CONCEPT protects against UV rays and excels in terms of breathability.

INTENSIVE CONCEPT does not betray expectations even in terms of style: its colors are always vibrant and brilliant.



## HYDRO-FIT 90% POLYESTER - 10% ELASTANE

Studiato appositamente per l'utilizzo sportivo, è la sintesi perfetta tra comfort e tecnica assicurando "performance" di altissimo livello. Test di laboratorio confermano un'elevata capacità di assorbimento dell'umidità ed una "evaporazione" della stessa in tempi sorprendentemente rapidi, mentre la tessitura delle fibre di poliestere, abbinate a elastomero, conferisce al tessuto estrema leggerezza e morbidezza.

It is particularly suitable for sports activities giving comfort and technology together. It guarantees high performance. Test results prove high perspiration and quick dry. The kind of combination of polyester yarn with elastane in manufacturing give to the final fabric lightness and softness.



## SKIN-PLUS 90% POLYAMIDE - 10% ELASTANE

Tessuto elasticizzato bidirezionale.

Favorisce la microcircolazione ed un'adeguata ossigenazione muscolare, sotto sforzo o a riposo. Gradevole a contatto con la pelle, traspirante, garantisce la corretta compressione muscolare.

Bi-directional elastic fabric. It will increase the microcirculation and a better muscle oxygenation, under stress or at rest. With a nice feeling on the skin, breathable and guarantees proper muscle compression.



## ELAXTECH 80% POLYAMIDE - 20% ELASTANE

Tecno - tessuto bielastico in poliammide. Micro effetto mano pesca, veste come una seconda pelle. Accompagna con dolcezza ogni gesto atletico. Mantiene la forma con un'ottima elasticità.

Techno-fabric bi-elastic in polyamide. Micro effect on the hands like a peach, feel like a second skin. Accompany with sweetness every athletic movement. Keep the shape with an excellent elasticity.



## COTTON 100% COTTON

Il cotone è una fibra leggera e robusta, tessuto naturale per eccellenza. Fresco e molto confortevole al contatto con la pelle. È perfetto per la realizzazione di capi sportivi.

Cotton fabric is a light and resistant fiber, recognized as the most natural fabric. Excellent sport fabric, fresh and very comfortable on skin.



## SEAMLESS

- Best functionality in freedom
- Perfect fit
- Maximum comfort
- Excellent breathability

Seamless è l'innovativo sistema di confezione che prevede l'utilizzo del minor numero possibile di cuciture.

Questa sua particolare tecnologia permette di creare zone di tessuto a densità "differenziata", favorendo una rapida evaporazione nelle zone critiche ed una maggiore capacità contenitiva dove è necessario. Inoltre il filato utilizzato è altamente performante e garantisce un elevato assorbimento e dispersione del sudore.

Seamless is the innovative tailoring system which contemplates the use of the smallest possible number of seams. This technology allows to design different waves of fabric in some necessary zones, helping the evaporation of sweat and the very close fit. The special fabric, from which the garment is made, is high-performing and offers excellent breathability.



## NILIT AQUARIUS

NILIT AQUARIUS è un filato dalle alte prestazioni che gestisce l'umidità. La fibra accelera l'evaporazione del sudore e dell'umidità dal corpo trasportandola lontano dalla pelle attraverso il tessuto verso l'esterno dove si dissolve.

NILIT AQUARIUS is a high performance yarn that manages moisture. The fiber accelerates the evaporation of sweat and moisture from the body, transporting it away from the skin through the fabric and out toward the air.



## NILIT BREEZE

NILIT BREEZE è una fibra rivoluzionaria ad effetto "cool" per una sensazione di freschezza e comfort. La speciale tessitura dona a questa fibra un benefico effetto refrigerante che mantiene una temperatura corporea confortevole durante e dopo la prestazione sportiva.

NILIT BREEZE is a revolutionary fiber with a "cool" effect for a sensation of freshness and comfort. The special weaving gives this fiber a beneficial cooling effect that maintains a comfortable body temperature during or after physical performance.

# Mikasa

## BEACH VOLLEYBALL

### 2020

[www.mikasa.it](http://www.mikasa.it)

